

# PUPIL PREMIUM TIERED MODEL

Colne Park High School

## 1 Teaching

Frequent low stakes testing to ensure all students, and in particular disadvantaged students, experience success and celebrate the acquisition of knowledge.

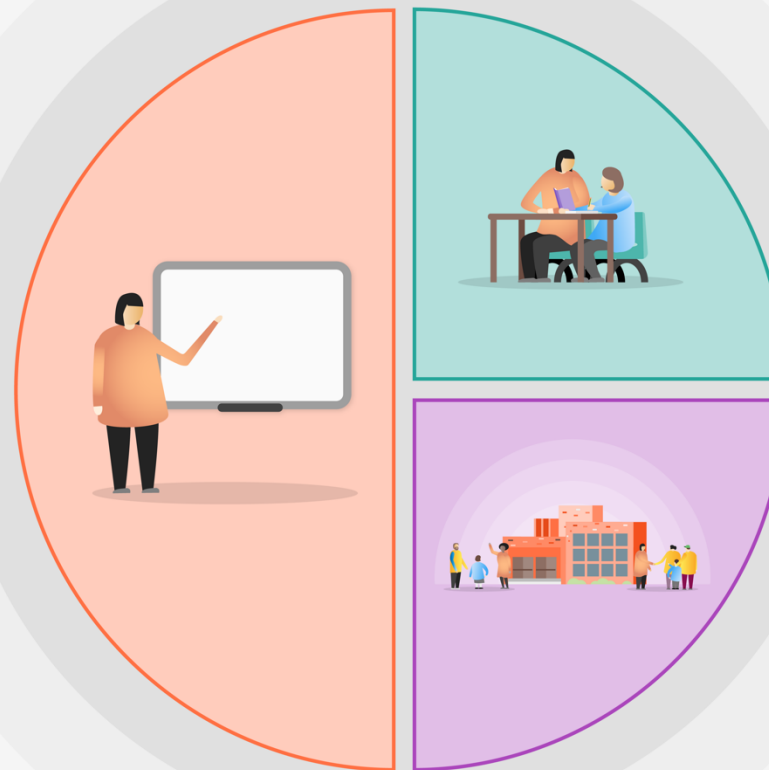
Half termly standardised assessments as a central point of T&L

Provide a comprehensive continued professional development programme for all staff focusing on subject pedagogy. Through the Great Teaching Toolkit - Evidence Review

Quality First Teaching supported by evidence informed CPD for teachers and support staff. Whole school implementation of EEF Metacognition Guidance

Quality Assurance that actively supports curriculum development

Improve engaging curriculum – introduce technical awards for targeted students.



## 2 Targeted academic support

Reduce barriers to independent learning with a timetabled period 6 for 'Prep Work' for all students.

Literacy and numeracy interventions from CAT4 assessments

Develop vocabulary curriculum to address current deficiencies with disadvantaged students with the development of Tier 2 and Tier 3 subject specific language.

KS4 Maths and English form time intervention, targeted intervention, and additional lessons

## 3 Wider strategies

Use of technology - provision of laptops to support independent learning of Disadvantaged students.

Establish a Team around the Disadvantaged Cohort (TAD) pastoral mentors.

Attendance team support

Development of LORIC skills