



Parents@Park (22.01.21)

Notices

- **Year 7 Parents evening** - apologies to anyone who experienced issues with our virtual parents evening. The issue was with our service provider and beyond our control. If you did miss an appointment slot, please email your child's subject teacher who will be happy to provide feedback.

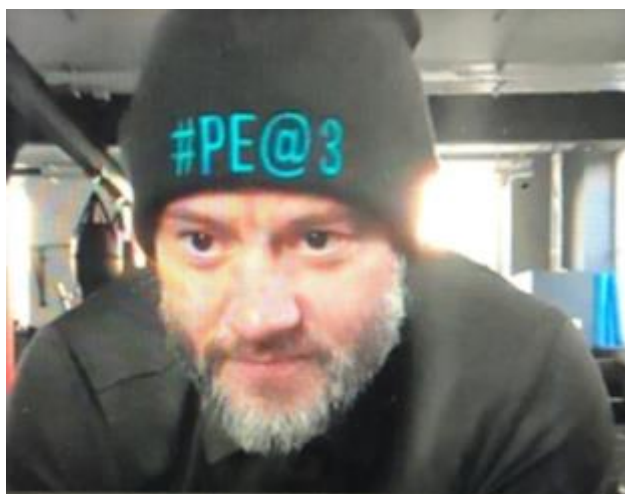
- Please [click here](#) for this week's school assembly **Thursday 22nd January**

- [Please click here](#) to find the vocabulary word lists for Year 7 and 8 students week commencing 22nd January. Students need to spend time making sure they understand the meaning of each word as well as being able to give examples of using it within a sentence. There is a weekly quiz to complete to check understanding and interpretation. This quiz will be set by the English team during the students' weekly reading lesson within their English curriculum. We would be grateful if you could continue to support school in encouraging students to focus on widening their academic language.

- Daily PE@3pm hosted via Year group Be the Best TEAMS.

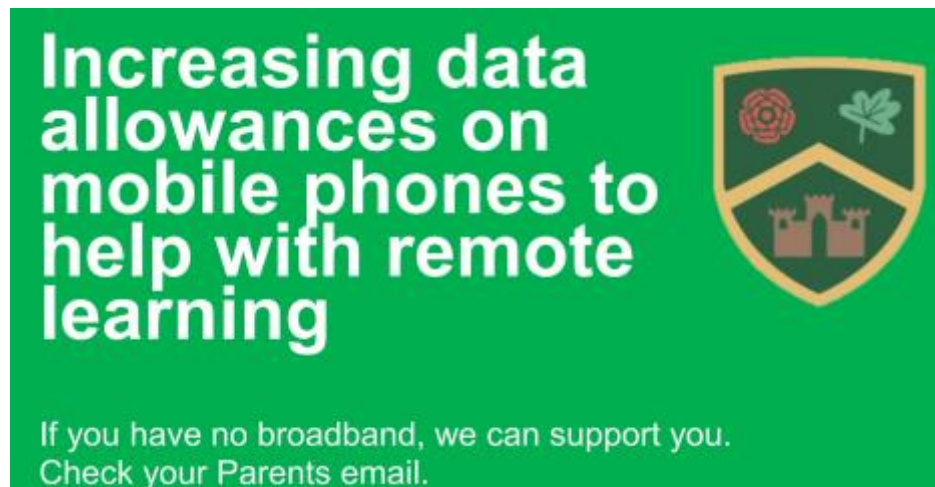
Monday	25-Jan	Year 7	Miss Ratcliff
Tuesday	26-Jan	Year 8	Mrs Harris
Wednesday	27-Jan	Year 9	Mr Allen
Thursday	28-Jan	Year 10	Mr Schofield
Friday	29-Jan	Year 11	Mr Curran

1 - This coming week's PE@3pm - get active and get involved!



2 - Mr Schofield is kitted and ready #PE@3pm

- [Click here](#) for **support for emotional wellbeing and mental health during these challenging times**. If you have any concerns or would simply like to speak about your son or daughter for reassurance please do not hesitate to contact Mr Jackson gjackson@park-high.co.uk who will be happy to help and support.
- Despite all students working remotely, if your child tests positive for Covid 19 or indeed has an illness that prevents work completion then please phone reception who will ensure all staff allow a break from remote learning and work submission.
- Please read this [read this link](#) for details of a DfE scheme that allows us to apply for increased data on your child's mobile phone.



A Community coming together

We continue to receive donated laptops and electronic devices from members of our local community to support our students with remote learning. These generous acts of kindness are massively helping our students to continue their studies. We as a school feel so very lucky and humbled to be part of such a wonderfully supportive and caring community.

Please [click here for further information](#) from the company leading this initiative and if you feel you could support school please email info@park-high.co.uk.



Remote learning and feedback during lock down

At the end of week 3 we are delighted with the students engagement with their remote learning including participation in live lessons and submission of high quality independent work. We continue to be mindful of differing personal circumstances and with this in mind although we endeavor to provide a broad, challenging and engaging remote curriculum, we completely understand there may be circumstances in which the completion of all tasks is not possible. The well being and happiness of our students remains our number one priority and all teachers are pleased when they receive work where students have tried their best independently and within their timetabled hour lesson. If there are any problems please encourage students to let their subject teacher know - they will be happy to help, support and make allowances when needed.

It is really important that students make time to relax, stay active and safely socialise with family and friends.

We thank you for your continued support.

- [Remote Learning FAQ's](#)
[Top tips for using Microsoft Teams on mobile devices click here](#)
[Please click here for the protocols for live lessons](#)

LIVE LESSONS – EXPECTATIONS STUDENTS



Your teacher will POST a reminder of the time and date of the live lesson. Live lessons can be viewed in your calendar (click join) If you have MS Teams open a join meeting box will appear on screen – press join)



Your camera and microphone will be turned off before joining. This protects your privacy and stops any background noise at your location from disturbing the lesson. These can be turned back on by your teacher later if you need to ask questions. Ensure you are appropriately dressed in case your camera accidentally turns on.

The lesson might be recorded. You will be advised of this. This allows you and any absent pupils to play it back later.



When you 'join' a lesson, this tool bar will be available. Hover over the screen, about 1/3 of the way up from the bottom to display it.

Let your teacher know you have a question using this tool. Please wait to be asked to speak, just as you would in a lesson. If you click  you will see that your hand is raised. Speak clearly and use appropriate language.

Be confident, calm and caring
 Sometimes the technology doesn't always work; sometimes internet connections 'lag'



Assessments January - April 2021

Spring Assessments - Adaptations due to Remote Learning

It is important we continue our remote learning and complete all PRP tasks as directed in preparation for our Spring Assessments. These have been adapted by your teachers in order to take place online and measure your progress.

Date	Year group	Assessment
Monday 1 st Feb to Friday 5 th Feb	Year 7, 8, 9, 10	All assessments will take online either through Microsoft Team Assignments or in live lessons
Monday 22 nd Feb to Friday 5 th March	Year 11 Formal Mock Examinations	Postponed
Monday 22 Feb to Friday 26 th March	Year 10 Formal Mock Examination	Formal Mock examinations scheduled
Monday 12 th April to Friday 23 rd April	Year 11 Formal Mock Examination	Formal Mock examinations scheduled

'best you can be'

The week ahead (25th January 2021)

- All students (unless key worker/vulnerable students) are working remotely via Microsoft Teams.

Dates for diary - further ahead

[Year 8 Parents Evening Letter](#) **Thursday 11th Feb**

[Parents Guide to virtual parents evening and appointment booking instructions](#)

[School Holiday Dates 2020-21 \(click\)](#)