



Parents@Park 11/02/22.

And just like that with the blink of an eye another half term has flown by. As always we have been busy throughout the term and I am sure both students and staff are looking forward to a well earned break. The number of students receiving rewards in itself highlights how fantastic students have been this term. With the focus on driving our high expectations of students at all times, it is brilliant to see so many students rising to the challenge and continually being the best they can be in school.

Happy Half to team Park - Parents@Park will take a week's break and return on Friday 25th February 2022



Rewarding Success




Park Point Award 31st January - 4th February 2022 -Congratulations to the pupils who received the Park Point award last week.

This week's **top Park Point awards go to Lucas Proud, Lexi Shaw and Charlie Baxter-Cooper.**

Congratulations also to our **Pupils of the Week!** Each week students from each of the four Houses and the Seniors are awarded the Pupil of the Week award. This award is achieved by receiving the most credits that week in their House. This week's pupils of the week are **Jasmine Bentley, Elliot Disley, Joshua Robinson, Charlotte Gregory, Fynlee Brett, Bailey Cuttriss, Evie Brown and Emily Hook**










COLNE PARK HIGH SCHOOL

Pupil of the Week

Awarded to— Jasmine Bentley







COLNE PARK HIGH SCHOOL



Pupil of the Week



Awarded to- Elliot Disley





COLNE PARK HIGH SCHOOL

Pupil of the Week

Awarded to— Joshua Robinson





COLNE PARK HIGH SCHOOL

Pupil of the Week

Awarded to— Charlotte Gregory





COLNE PARK HIGH SCHOOL

Pupil of the Week

Awarded to- Fynlee Brett





COLNE PARK HIGH SCHOOL



Pupil of the Week

Awarded to- Bailey Cuttriss





COLNE PARK HIGH SCHOOL



Pupil of the Week

Awarded to— Evie Brown





COLNE PARK HIGH SCHOOL



Pupil of the Week



Awarded to- Emily Hook





COLNE PARK HIGH SCHOOL

Park Point
Charlie Baxter-Cooper



PARK POINT

CONGRATULATIONS YOU RECEIVED THE
MOST PARK POINTS LAST WEEK.



PARK POINT



COLNE PARK HIGH SCHOOL

Park Point Lucas Proud



PARK POINT

CONGRATULATIONS YOU RECEIVED THE
MOST PARK POINTS LAST WEEK.



PARK POINT



Year 8 Student Celebration

This week Mrs Eulert's been busy meeting up with a group of our high attaining Year 8's. These students were the highest performing Year 8's last term. These students are definitely '**making it happen**'

Well done everyone!



Inter- house - Inter-school goes Trust wide!

Introducing Pennine Trust's very first Inter-house competition for our Primary Schools friends!

Teams from Lord Street, Laneshaw Bridge and Blacko, all joined together into **'house' teams** and competed against each other. The pupils showed great team work and communication skills working with pupils from other schools. Competition was fierce but there were smiles all round and new friendships cemented along the way too.

An Inter school competition was then held, with Lord Street being crowned Champions, after some exciting and very loud games!

A massive thank you again, to the student Park Sports leaders, who literally ran the show! Tag rugby and basketball tournaments are being planned for the next half-term. Watch this space....



Notices

- An invitation for [Year 10 Parents Eve on Thursday 10th March 2022](#) (bookings will go live on 21st Feb 2022)

[guide to booking appointments here.](#)

[attending parents evening via video appointments please see here.](#)



PARK HIGH SCHOOL

'RAISING ASPIRATIONS'

Pastoral Team@Park

We are extremely grateful for everyone in the **#ParkFamily**, but the Pastoral Team are the team who support our student's day in and day out, to ensure they can be the best they can be.

The **House system is at the heart of life at Park High School**. It is in the community of the House that most pupils find the confidence and sense of purpose that lead to fulfilment in the larger community of the School. Park High School is a family and the house system **fosters care and respect between all students**. A **sense of community and competition** underpins the ethos of the house system where care for all underpins all that we do.

The pastoral system is built around the house structure. We have five houses each with a Director of House, a full time Pastoral Support Worker and an Assistant Director of House. Each form has two form tutors, that will be your first line of communication and our **attendance team support pupils to be in school**. We have a fully staffed **Hub for students who have had a challenging time and need reintegrating into their timetable**, with the time and care that they need. We are very proud of our system, we are sure you will appreciate the warmth and support it offers to the students.



Student Voice: an update from Park High School Inclusion Alliance

Written by Anna Whiteside and Ashton Wright on behalf of the Park High School Inclusion Alliance

"At Park, we have been working together with the teachers and other students to create a more diverse and inclusive school. We want to make all students feel safe, comfortable in our environment and to feel recognised for their individuality.

To accomplish this we have firstly, put together a group on Fridays after school where anyone can go to talk about any problems they have experienced, any worries they might have or simply to talk with friends and be in an environment where they feel comfortable being themselves. Also if anyone has any ideas on how to improve the school they can discuss them here and they will be passed on to the senior leadership team.

Secondly, we have put together a group which we call the Alliance, which is a group of students each with different goals for what we want to change about the school. This group is made to be the forefront of the culture shift at Park, we work closely with the senior leadership team and other teachers to come up with effective ways to make a difference. We also take ideas from other peers and take them to the meeting to discuss and then be acted upon. This does not have to be about problems surrounding the LGBTQ+ community, but about sexual harassment or discrimination in any form going on in our school.

Around the school we have TVs on the walls which keep the students informed of ongoing situations in the world, the weather, and what we are celebrating this week. For example this month is LGBTQ+ history month and the presentations on the TVs are making this known and encouraging people to acknowledge it. As you might know we have Intrinsic PD sessions during our lunch, and these

can be very engaging to the class and instigate conversations on the topics of the power points, making the students think and acknowledge what it's about and how to help with situations that might occur."



 COLNE PARK
HIGH SCHOOL

**Inclusion
Alliance**

Broadening Horizons

Week 21 – w/c Monday 21st February

Week 21 w/c 21.2.22

Words of the week

totalitarian (adjective) – a form of government that allows no individual freedom

obligatory (adjective) – something you must do because of a rule or law

abbreviation (noun) – a shortened form of a written word or phrase

The citizens were relieved to see the old **totalitarian** regime overthrown.

E - mail is the **abbreviation** of electronic mail.

It is **obligatory** to wear the correct uniform in school

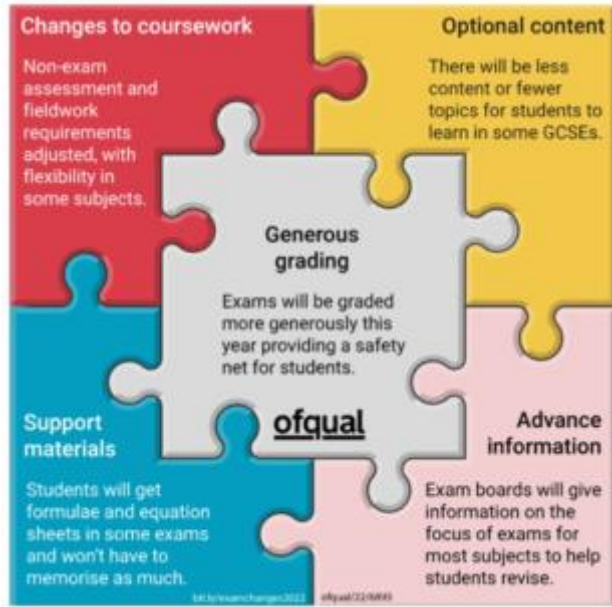
WOW in Action



Year 11 GCSE Summer 2022 Examination -Advanced information

As you may be aware Ofqual announced on Monday 7th Feb a package of support has been put in place for students taking GCSE qualifications in summer 2022. It is intended to make sure that they are being as fair as possible to students given the disruption they have experienced, and many continue to face, due to the coronavirus pandemic.

Part of the changes includes [more generous grading this year](#) to provide a safety net for students who may have been impacted by the pandemic.



We will be going through this **advanced information** with our students during the spring and summer term to ensure they are as fully prepared as possible. More information will follow in the coming weeks and we have already started by adapting some of our February Mock Examination in light of this weeks information

To help students focus their exam preparation, examination boards have reduced content in some subjects and have released **advance information** on what examinations will cover. The link below takes you to the Ofqual webpage and linked documents

[Subject-by-subject support for GCSE, AS and A level students in 2022 - GOV.UK \(www.gov.uk\)](http://www.gov.uk)

Mr Allen has emailed Year 11 Parents and students a document with links to our subjects and examination boards.

Year 11 Mock Examination Timetable

	Monday 21-Feb	Tuesday 22-Feb	Wednesday 23-Feb	Thursday 24-Feb	Friday 25-Feb	Saturday 26-Feb	Sunday 27-Feb	Monday 28-Feb	Tuesday 01-Mar	Wednesday 02-Mar	Thursday 03-Mar	Friday 04-Mar
Period 1								English Lang 2	Chemistry 2	Option 2 - 1	Option 2 - 2	Humanities 2
Period 2												
Break												
Period 3	Normal Lesson	Normal Lesson	Normal Lesson	Normal Lesson	Normal Lesson			Normal Lesson	Normal Lesson	Normal Lesson	Normal Lesson	Normal Lesson
Break												
Period 4	Biology 1	Option 1 - 1	Chemistry 1	Physics 1	Biology 2			Maths 2	Option 3 - 2	Option 1 - 2	Physics 2	Maths 3
Period 5												
	1hr 45	1hr 45	1hr 45	1hr 45	1hr 45			1hr 30	1hr 45	1hr 45	1hr 45	1hr 30

Covid 19

- Student self isolation period can end **if they test negative on the morning of day 5 and the morning of day 6**, they can return to school on day 6. Please note the **first test must be taken no earlier than day 5 of the self-isolation period**, and the **second must be taken the following day**. All test results should be reported to the [NHS Test and Trace](#) and to school on [Report student Covid home testing results to school](#)

- Fully vaccinated individuals, children and young people aged between 5 and 18 years, identified as a close contact of someone with COVID-19, should take an LFD test every day for seven days and continue to attend their setting as normal, unless they have a positive test result or develop symptoms at any time.”

- **COVID-19 lateral flow testing at home will continue twice weekly until further notice.**

[Report student Covid home testing results to school](#)

As per the guidance please continue to log the results with both the NHS and school log.

Park Students dig deep at Lancashire Schools Cross Country



Last weekend saw a good contingent of Park pupils running for Pendle. The weather was atrocious (true cross country at its best!) but that did not stop our pupils turning in excellent performances.

The headlines go to the older pupils as both William Walker (Inter Boys) and Isabel Holt (Inter Girls) once again who turned in brilliant performances to win their races and become County Champions. In the Inter Girls race a Park pupil also took second place with **Eve Hartley** running fantastically.

In the other races there were some brilliant individual and team results. In previous years whilst the Pendle team has had some excellent runners they have not done as well in the team events. However, this year the Year 7 Girls team finished as runners-up with **Lottie Hesketh (6th), Jessica Oldham (22nd), Maisie Warren-Beck (39th), Phoebe Law (40th), Hannah Beebe (42nd) and Imogen Taylor (47th) all contributing to the team.**

In the Inter Girls event the team finished in 3rd with Isabel and Eve the top 2 which was supported by **Gemma Kenniford (23rd) and Tilly Hird (58th).**

Other pupils to represent Pendle brilliantly on the day were **Jack McFadyen (56th in the Year 7 boys), Ruby Terry (48th in the Junior Girls) Charlie Reeder (31st), Max Belshaw (41st) and Callum Singleton (43rd)** in the Junior Boys and **Ben Stratton 19th** in the Inter boys.

There was also a success in the Senior Girls race with former pupil **Abbie Stratton winning the race to become County Champion.**

A huge well done to all the pupils involved.



Dates for the diary further ahead...

- **Monday 21st February** -Year 11 full mocks commence

- **Thursday 03rd March**- Year 8 Options Evening

- **Thursday 10th March** - Year 10 Parents Evening

Contact Us@

[Website Contact Us page can be found here](#)

School Holiday dates 2021-22

[Please click here to find the school holiday dates for 2012-22](#)